

## 24 INCH VENTED ELECTRIC DRYER

DV17542



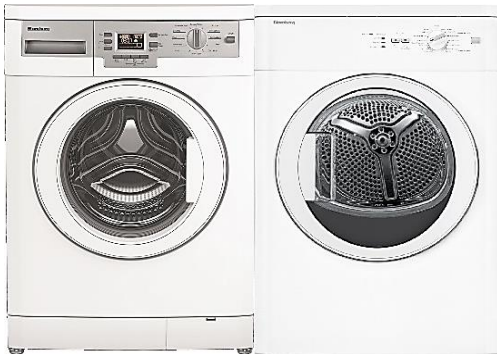
### Main Features

- Compact dryer
- 15 drying programs
- 3.7 cu-ft dryer capacity
- Child Lock
- Stack kit included
- Anti-creasing
- Easy access to lint filter
- Lifetime stainless steel drum

### Dimensions

H x W X D: 33 1/8" x 23 1/2" x 21 7/8"

## Compact Washer & Dryer



Blomberg knows an upscale urban lifestyle often puts space at a premium, but that doesn't mean sacrificing style or superior performance. Our 24-inch compact washers and dryers fit in perfectly, offering flexibility and freedom in installation (including an optional stacking kit), plus all the functionality and finesse required for expert clothing care. Despite their compact size, this washer deftly handles 1.95 cu. ft. of laundry while the dryer dries 3.7 cu. ft. loads—both with a variety of cycles for different fabrics.

### Stack Kit Included

We furnish this easy-to-install kit with every washer. Blomberg offers abundant flexibility and a safe way to keep aesthetic harmony between washer and dryer pairs no matter where they fit in your life.

## In Harmony with Your Life



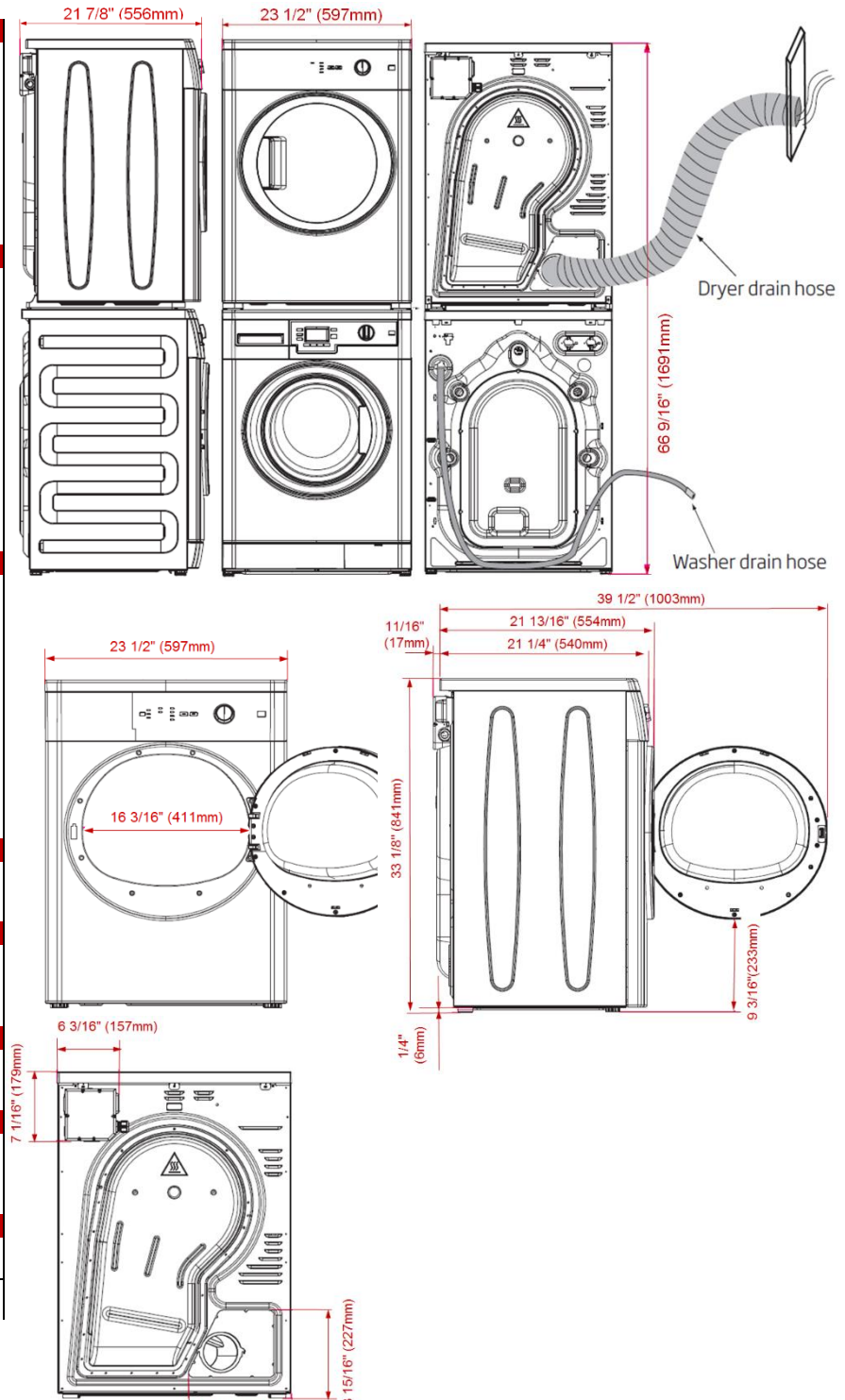
### Anti-creasing Option

The gentle drum action of a Blomberg dryer separates and smooths out individual garments as they dry, so when the cycle finishes clothes come out wrinkle-free and ready to wear. But just in case you're not immediately available when the cycle stops, this clever option keeps the drum rotating periodically for up to two hours and keeps your clothes from creasing.

# 24 INCH VENTED ELECTRIC DRYER

## DV17542

GENERAL	DV17542
Dryer Type	Electric Air-vented
Capacity cu. ft.	3.7
Dry load capacity kg	7.0
Dry load capacity lbs.	15.5
Drum material	Stainless steel
Control	LED- Display
Silence level dBA	66
Automatic water drain	No
Reduce static cling	No
Delay Time	No
CYCLES	
Number of Cycles	15
Normal / Regular cotton	Yes
Permanent press	Yes
Mixed fabric	Yes
Delicates	Yes
Bulky	No
Air Fluff / no heat	No
Woolens	No
Jeans	Yes
Baby sanitize	No
Silent Program	No
Jogging Wear	No
Quick Dry 30'	No
Timed Dry	15-30-75min
FUNCTIONS	
End of cycle buzzer	Yes
Child lock	Yes
Automatic easy ironing	Yes
Interior drum led lighting	No
Glass door with heat protection	Yes
Reversible glass door	No
Program follower	Yes
Levelling legs	2
Clean filter indicator	Yes
Number of vent options	1
Bi-directional drum action	Yes
Low heat	Yes
Auto cool-down phase	Yes
MATERIALS AND FINISHES	
Cabinet	White
Door rim	White
Cycle selector knob	Sliver
DIMENSIONS	
Product Dimensions (HxWxD) in	33 1/8" x 23 1/2" x 21 7/8"
Product Dimensions (HxWxD) cm	84.1 x 59.7 x 55.6
Product Weight kg	35.5
Product Weight lbs.	79
TECHNICAL FEATURES	
Rated Current Amps	15
Voltage/ Frequency	208 - 240V / 60Hz
Watts (W)	2000
ENVIRONMENTAL STANDARDS	
Energy star qualified	No
Energy consumption kWh/year	379
UL listed	Yes
RoHS compliant	Yes
Stacking Kits	
Kit-1 (Universal Stacking Kit): Can be mounted with all WM with any depth	2977200300
Kit-2: Can be mounted with all WM with 21 1/4" (54 cm) depth	2967100100



Stacked installation minimum air gap clearances: 6 1/4" top, 1/2" sides, 4" back, front 1/2"

NOTE TO THE INSTALLER: All height, width and depth dimensions are shown in inches (as well as metric). Beko US Inc. reserves the absolute and unrestricted right to change product materials and specifications, at any time, without notice. Please visit our website [www.blombergappliances.us](http://www.blombergappliances.us) or call 888 352 2356 to verify the latest specifications with final dimensional data and other details prior to installation and making a cutout. Applicable product limited warranty information may be found in accompanying product materials or you may contact your account manager for further details. Proper installation is the responsibility of the installer. Product failure due to improper installation is not covered under the Limited Warranty.